



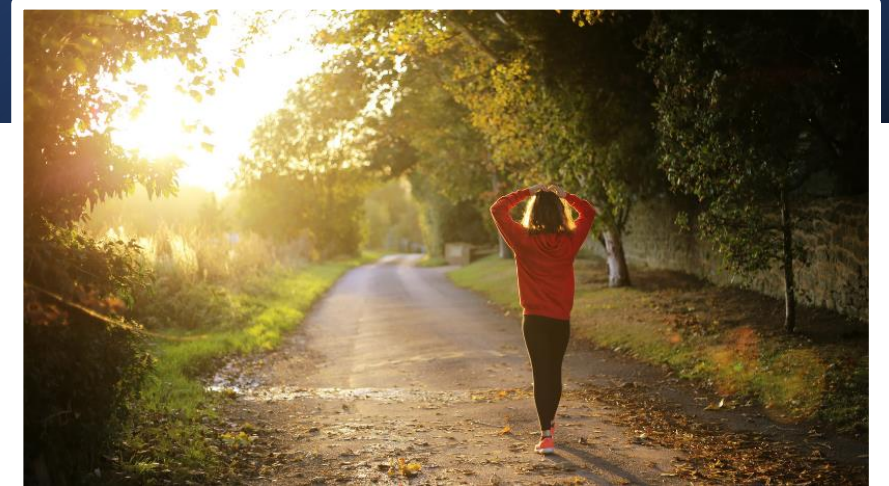
Dacorum Local Cycling and Walking Infrastructure Plan (LCWIP)

Hertfordshire County Council & Dacorum Borough Council
12th October 2023



Agenda

- What is a Local Cycling and Walking Infrastructure Plan (LCWIP)?
- What work has been done so far?
- What is the purpose of today's session?
 - What we need from you





What is a LCWIP?



What is a LCWIP?

A strategic approach to identifying and planning cycling and walking improvements.



The key outputs of LCWIPs are:

- a network plan for walking and cycling which identifies preferred routes and core zones for further development
- a prioritised programme of infrastructure improvements for future investment
- a report which sets out the underlying analysis carried out and provides a narrative which supports the identified improvements and network

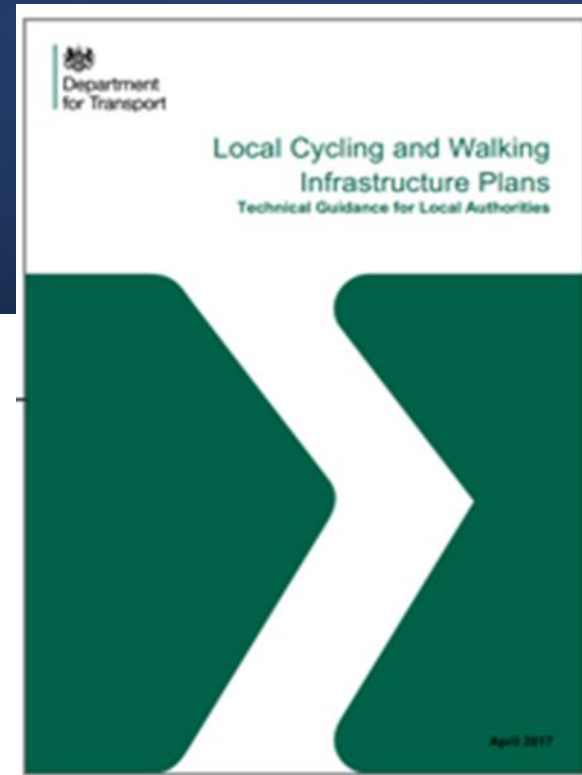
National Strategy Guidance

Cycling and Walking Investment Strategy (2016)

- “making walking and cycling the natural choice for shorter journeys or as part of a longer journey”
- aims to double cycling, increase walking and especially the number of children walking to school

Local Cycling and Walking Infrastructure Plans

- **Technical Guidance for Local Authorities** published by the DfT (April 2017)
- New, strategic, **evidence-based** approach to identifying cycling and walking improvements needed at the local level
- Six-stage process, including **stakeholder engagement**



Active & Sustainable Travel: Aims

“The objectives, aims and target in [CWIS1](#), alongside the vision set out in [Gear change](#) (2020), have informed our revised set of 4 objectives to 2025 to:

- increase the **percentage of short journeys in towns and cities that are walked or cycled** from 41% in 2018 to 2019 to 46% in 2025*
- **increase walking activity**, where walking activity is measured as the total number of walking stages per person per year, to 365 stages per person per year in 2025*
- **double cycling**, where cycling activity is measured as the estimated total number of cycling stages made each year, from 0.8 billion stages in 2013 to 1.6 billion stages in 2025*
- **increase the percentage of children aged 5 to 10 who usually walk to school** from 49% in 2014 to 55% in 2025”*

- Cycling & Walking Investment Strategy

*“To support the creation of built environments that encourage **greater and safer use of sustainable transport modes**, the county council will in the design of any scheme and development of any transport strategy consider in the following order:*

- Opportunities to reduce travel demand and the need to travel*
- Vulnerable road user needs (such as pedestrians and cyclists)*
- Passenger transport user needs*
- Powered two wheeler (mopeds and motorbikes) user needs*
- Other motor vehicle user needs”*

- HCC LTP4 (2018)

Why are they important?

- Fundamental in making the case to secure future funding for walking and cycling infrastructure.
- Having an LCWIP is a central part of future funding bids to:
 - Department for Transport
 - Active Travel England
 - Local Transport Plan implementation plans
- The background evidence undertaken as part of the LCWIP process, can be included in funding applications to make the strategic case for investment.

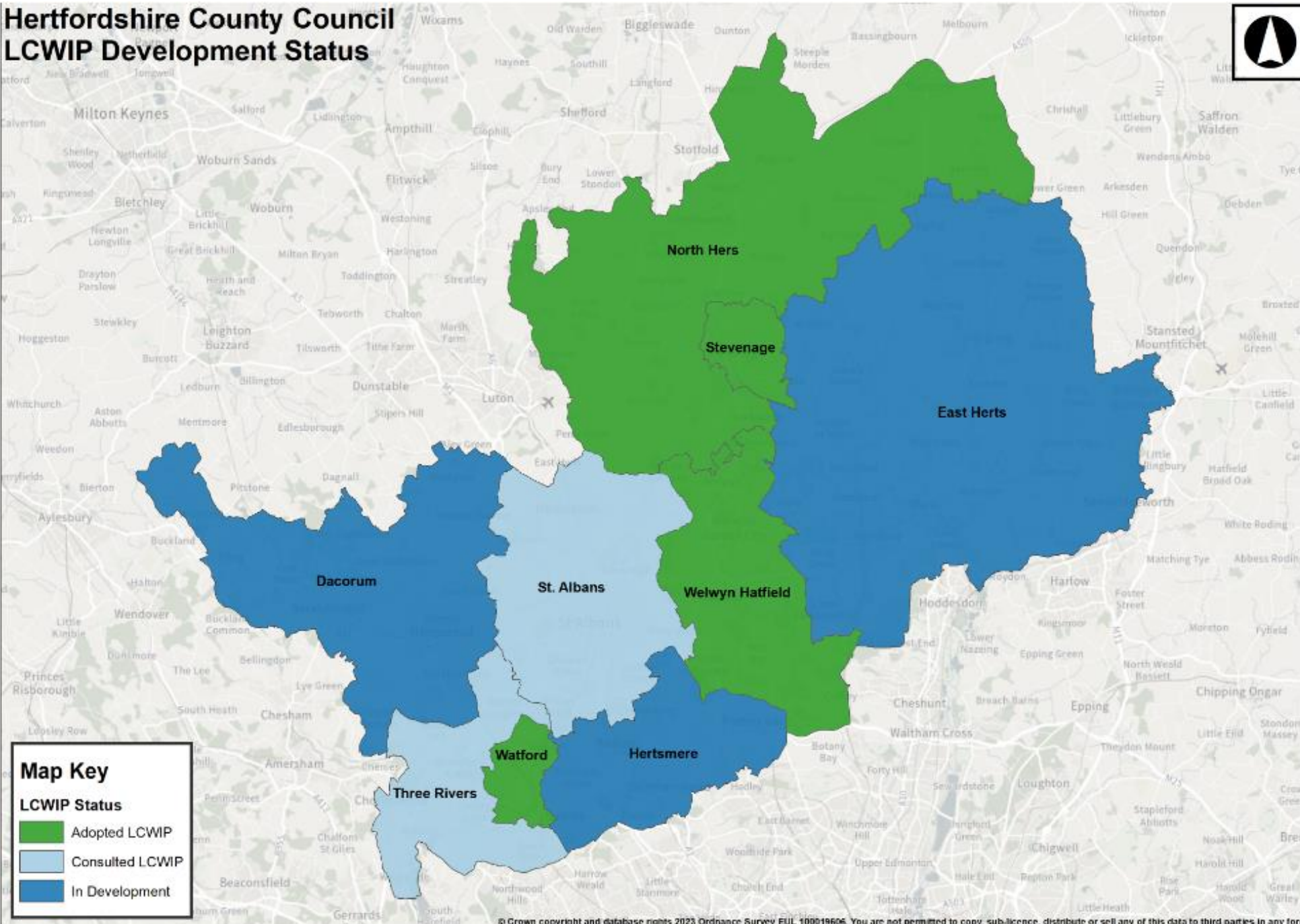


Hertfordshire LCWIPs

Currently being developed	Consulted and currently being reviewed	Adopted
East Herts District Council Dacorum Borough Council Hertsmere Borough Council	St Albans District Council Three Rivers District Council	North Herts District Council Stevenage Borough Council Watford Borough Council Welwyn Hatfield Borough Council

For more information visit HCC LCWIP web page by clicking [here](#).

Hertfordshire County Council LCWIP Development Status



Map Key

LCWIP Status

- Adopted LCWIP
- Consulted LCWIP
- In Development

Partnership Background

The Dacorum LCWIP is a partnership between Dacorum Borough Council and Hertfordshire County Council.



- Memorandum of Understanding (MoU) has been completed between HCC and DBC



Gathering information: -

- undertaking a detailed review of existing walking/ cycling network
- Collecting information from HCC/DBC/National Highways
- transport and land use schemes & feeding in information from existing cycle studies.



Activities being undertaken include: -

- County and District key plans and strategies for consideration
- identify key corridors/areas
- identify national and local datasets and sources as per DfT guidance



- Data modelling and outputs are being prepared for discussing at Member and Stakeholder workshops

Bournemouth Example

Whitelegg Way, Bournemouth



Plans for these improvements were informed during the LCWIP Public Engagement (late 2020) and formal consultation (Feb-March 2021).

More information can be found [here](#).

Dorset Examples

Before and after –
Wimborne Road West in
Colehill, Dorset

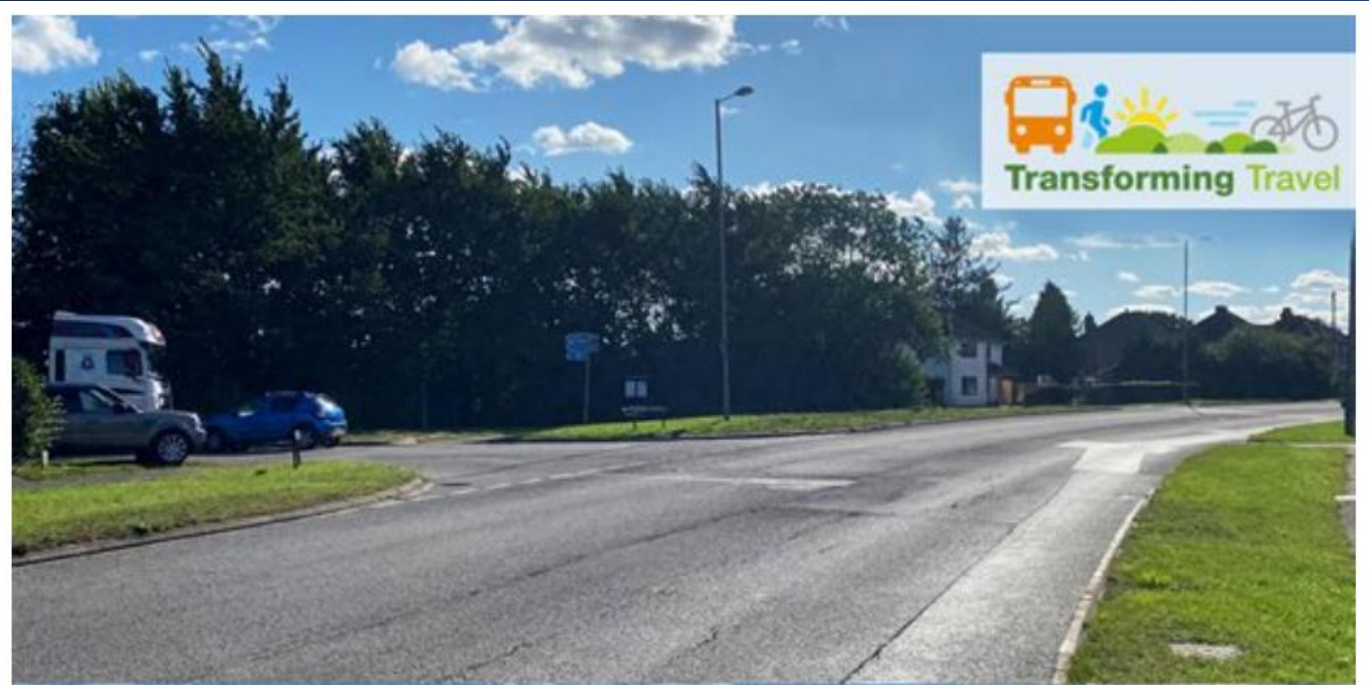
Funded by: -

- Dorset Transforming Cities Fund
- DfT grant through Sustrans Paths for Everyone Programme
- Further monies from the council and local transport and business organisations



Dorset Examples

Before and after – Hayes Lane Junction, Wimborne Road West.



Dorset Examples

Before and after image of the new parallel crossing and cycle lanes near the junction with Hayes Lane and Wimborne Road West in Colehill.

More information can be found [here](#).



Stevenage Example

North Road, Stevenage

- Scheme currently in build.
- LCWIP adopted in 2019.



Focus

The focus is on routes that have the **greatest demand** and therefore **greatest potential** to enable these increases in walking and cycling in the borough.

LCWIP Process

1. Determining scope - establish geographic boundaries and governance arrangements

2. Gathering information - identify existing patterns and potential new journeys; identify barriers; review related transport and land use policies

3. Network planning for cycling: origin and destination points, cycle flows, and network of routes and improvements required

4. Network planning for walking: origin and destination points, pedestrian flows, and network of routes and improvements required

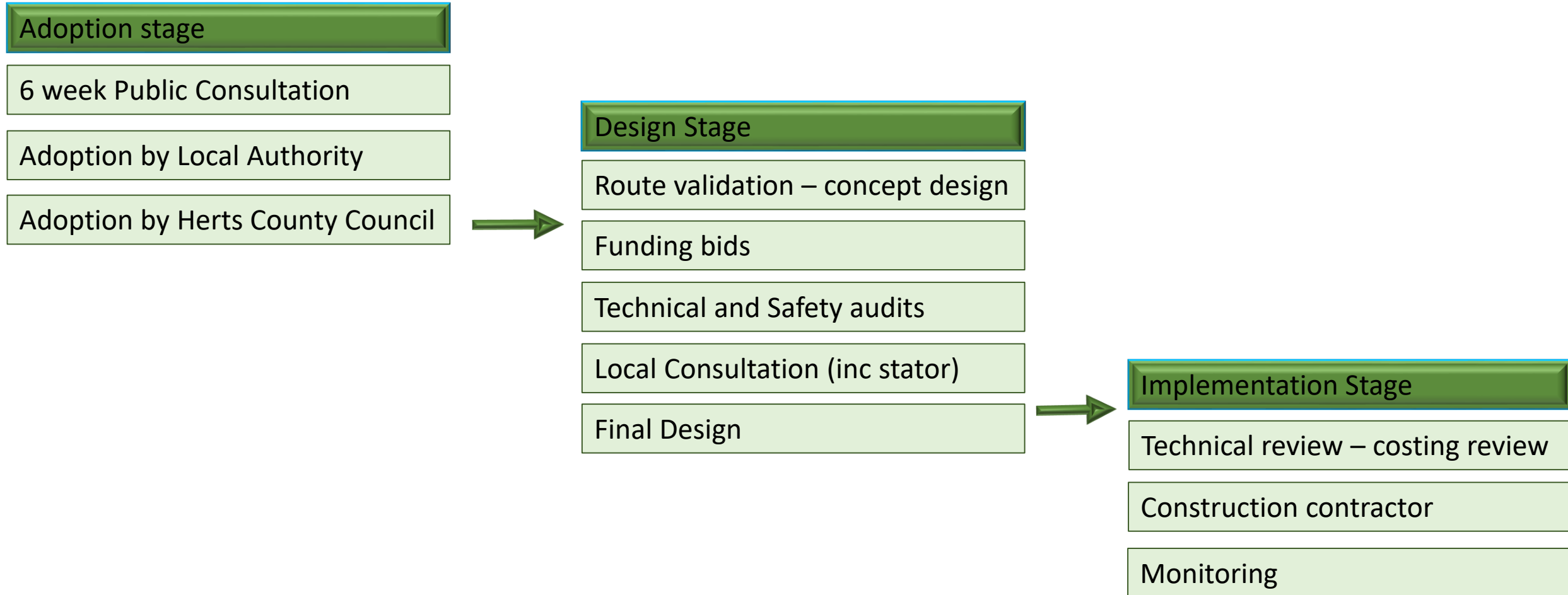
5. Prioritising improvements - develop a phased programme for future investment and combine into LCWIP

6. Integration and application - integrate outputs into local planning and transport policies, strategies and delivery plans

Consultations

Initial Engagement with Members, Stakeholders & Public	Workshops with Members & Stakeholders only	Public Consultation
<p>To introduce draft cycling and walking network maps, foster engagement with the LCWIP process and gather feedback.</p>	<p>Present post-engagement updated cycling and walking network maps and check feedback has been interpreted correctly.</p>	<p>Present final cycling and walking maps to the public to promote understanding and seek feedback.</p>

HCC process post LCWIP



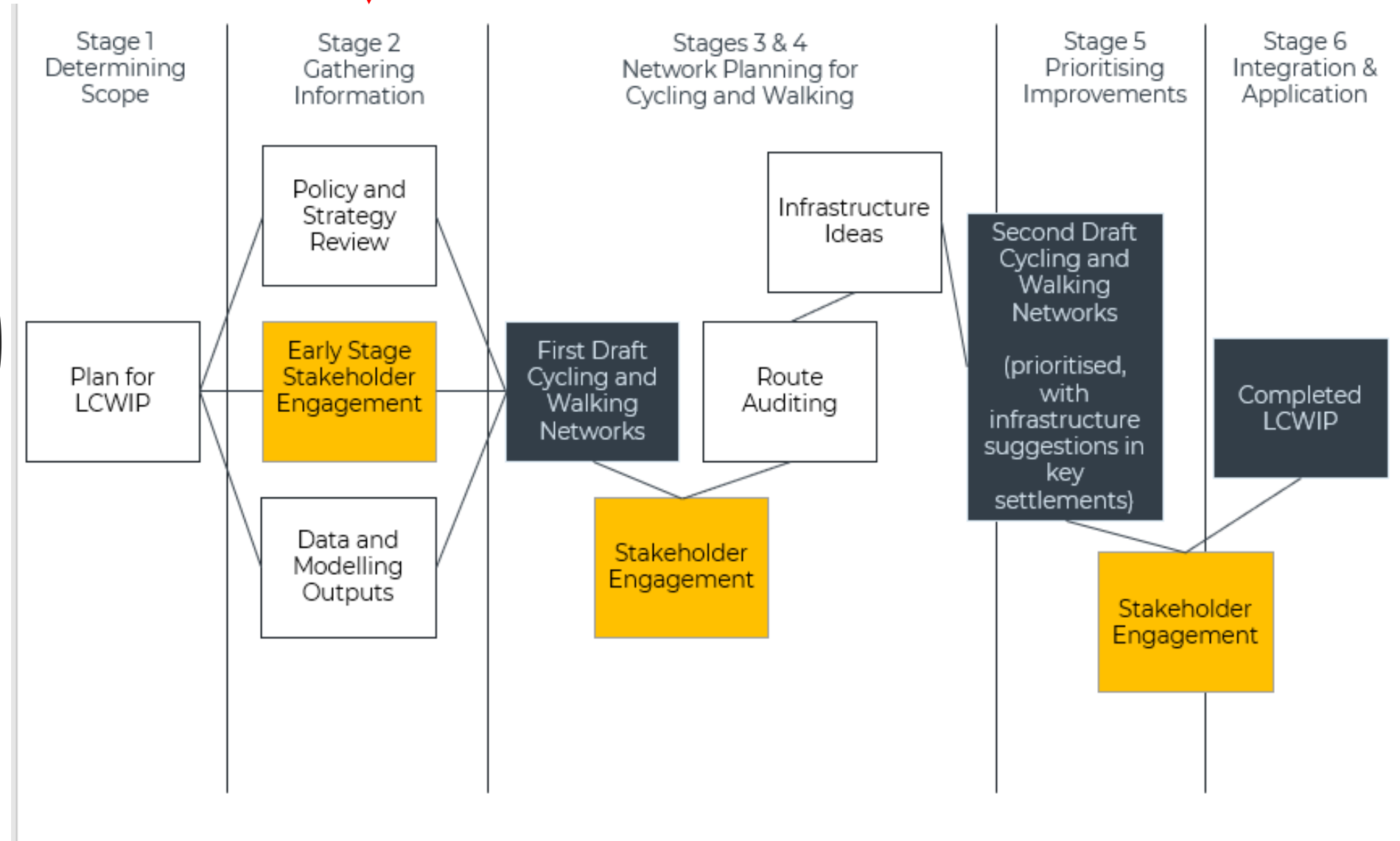


What work has been done so far?



Stakeholder Engagement

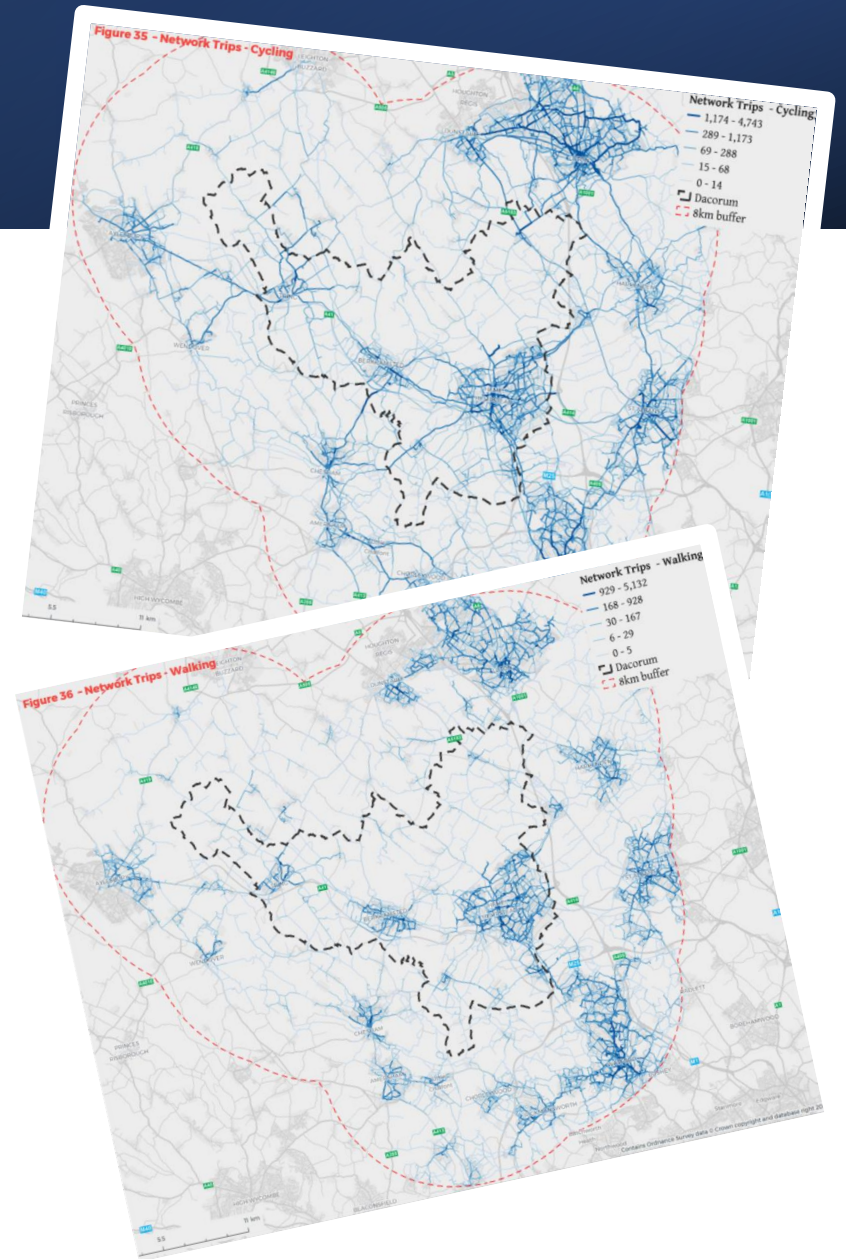
We are here



Gathering Information

The first cycling and walking network maps, will be influenced by key sources including: -

- WSP/HCC LCWIP GIS Model – which plots potential trips from residential origins to key destinations against a range of flexible assumptions/scenarios
- Local Plans Growth and Transport Plans
- Propensity to Cycle Tool outputs
- Existing Active Travel Infrastructure; Rights of Way
- Strava; Widen My Path



RISE

We RISE to the challenge

What we need from you please...



Prior to Member Engagement Workshop – Jan 24

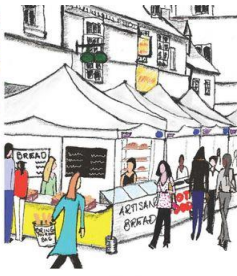
- Identify key community groups that can feed in to LCWIP process
- Gather information to bring back to engagement session in January
- Publicise LCWIP process
- Inform project team of any community events or forums that could be used for engagement





Quality-Sustainability-Local
RICKMANSWORTH
#LOVE YOUR
HIGH STREET
EVENTS

Market Dates 2023
 Sunday 30th April
 Sunday 29th May
 Sunday 25th June
 Sunday 30th July
 Sunday 27th August
 Sunday 24th September
 Sunday 29th October
 Sunday 26th November
 Sunday 17th December
 10.30am to 2.30pm



SRI LANKAN STREET FOOD
 EMBROIDERED ITEMS, GARMENTS, PRELOVED & GIFTS
 INDIAN SNACKS

RICKMANSWORTH

CAKES, COOKIES, BROWNIES & ROCKY ROAD PRE-LOVED CLOTHING
 BRITISH CHEESE, CHARCUTERIE & ACCOMPANIMENTS
 FUDGE NATURAL DOG TREATS CINNAMON BUNS, BREAD & PATISSERIE
 GAME FOOD BBQ WOOD FIRED PIZZA PICKLES, CHUTNEYS & SAUCES
 LOCALLY GROWN IN&OUTDOOR PLANTS JARRED CURRY PRODUCTS
 CARIBBEAN FUSION STREET FOOD LOCALLY ROASTED COFFEE BEANS
 PORTUGUESE CAKES & SAVOURIES HOMEWARES & GIFTS
 CRYSTALS, JEWELLERY BATH PACKS SPARKLY GIFTS AND BAGS
 SEA GLASS & PEBBLE GIFTS HANDMADE SOAPS & BATH BOMBS
 CANDLES, WAX MELTS, ESSENTIAL OILS, REED DIFFUSERS
 TRUFFLES & TRUFFLE PRODUCTS VEGAN & NATURAL SKINCARE & MAKE UP
 HANDMADE QUILTS, TROWNS & CUSHIONS



RICKMANSWORTHEVENTS.CO.UK





Creating a cleaner, greener,
healthier Hertfordshire

